

R26-CAG-LSL-GqDREADD(hM3Dq)-2A-mCitrine

Nomenclature	C57BL/6Smoc- <i>Gt(ROSA)26Sor</i> ^{em1(CAG-LSL-HA-GqDREADD(hM3Dq)-P2A-mCitrine-WPRE-polyA)Smoc}
Cat. NO.	NM-KI-190106
Strain State	Embryo cryopreservation

Gene Summary

Gene Symbol Gt(ROSA)26Sor	Synonyms	R26, ROSA26, AV258896, Gtrgeo26, Gtrosa26, Thumpd3as1
	NCBI ID	14910
	MGI ID	104735
	Ensembl ID	ENSMUSG00000086429

Model Description

These mice harbor a CAG-LSL-HA-GqDREADD (hM3Dq)-P2A-mCitrine-WPRE-polyA cassette in the Rosa26 locus generated by homologous recombination.

Research Application: Chemical Genetics studies. The GqDREADD(hM3Dq) could stimulate the activity of neurons following administration of CNO.

*Literature published using this strain should indicate: R26-CAG-LSL-GqDREADD(hM3Dq)-2A-mCitrine mice (Cat. NO. NM-KI-190106) were purchased from Shanghai Model Organisms Center, Inc..

Validation Data

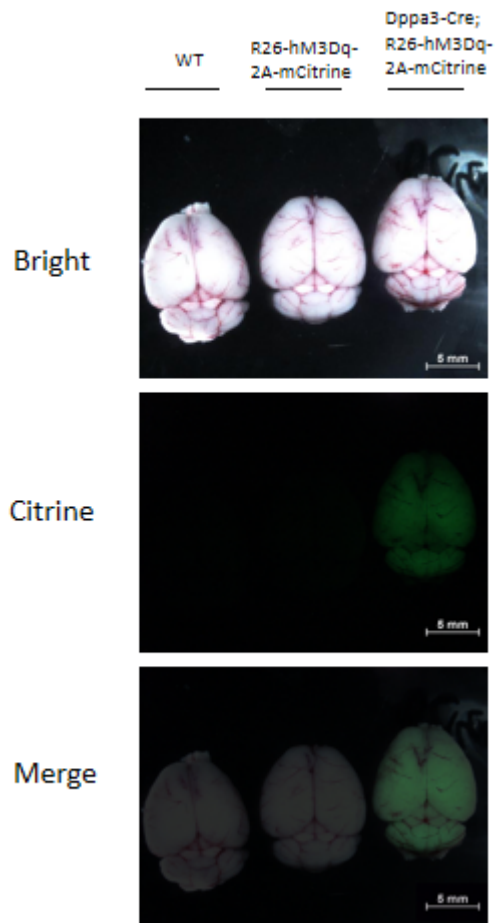


Fig1. Expression Pattern of Citrine in the brain of Dppa3-Cre^{+/-};R26-hM3Dq-2A-mCitrine^{+/-} mice.