

# hINHBE

<b>Nomenclature</b>	C57BL/6Smoc- <i>Inhbe</i> <sup>em1(hINHBE)Smoc</sup>
<b>Cat. NO.</b>	NM-HU-233512
<b>Strain State</b>	Repository Live

## Gene Summary

<b>Gene Symbol</b> <b>Inhbe</b>	<b>Synonyms</b>	-
	<b>NCBI ID</b>	<a href="#">16326</a>
	<b>MGI ID</b>	<a href="#">109269</a>
	<b>Ensembl ID</b>	<a href="#">ENSMUSG00000047492</a>
	<b>Human Ortholog</b>	INHBE

## Model Description

The endogenous mouse *Inhbe* gene was replaced by human INHBE gene.

\*Literature published using this strain should indicate: hINHBE mice (Cat. NO. NM-HU-233512) were purchased from Shanghai Model Organisms Center, Inc..

## Validation Data

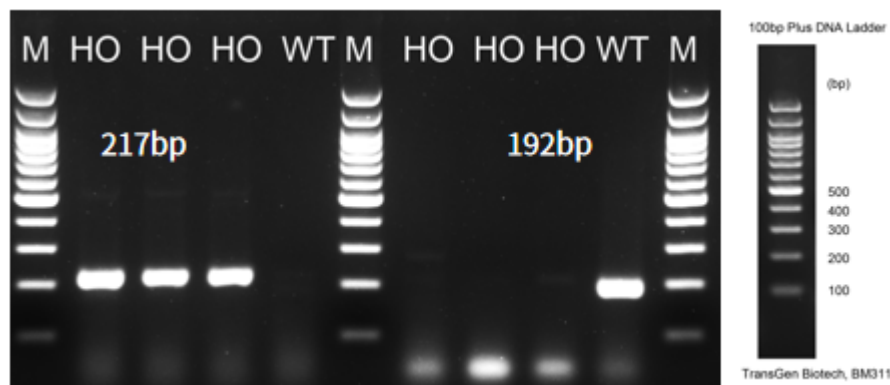


Fig.1 Detection of INHBE expression in liver by RT-PCR.

Wild type: only one band at 192 bp with primers F1/R1 (mInhb);

Homozygous: only one band at 217 bp with primers F2/R2 (hINHBE).

Abbr. M, DNA marker; HO, homozygous; WT, wild type.

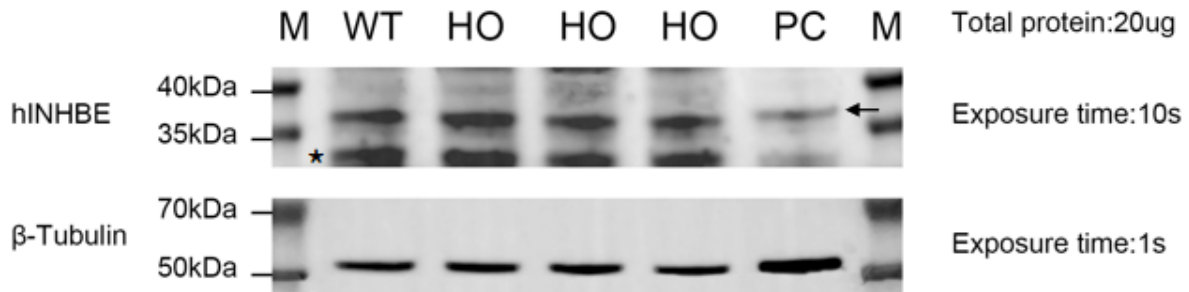


Fig.2 Detection of human INHBE expression in liver in hINHBE knockin mice by WB.

Abbr. M, marker; WT, wild type; HO, homozygous; PC, positive control, Hep G2 cells.

Note. The anti-human INHBE Antibody cross-reacted with mouse INHBE and humanized INHBE. Arrow indicates expected molecular weight and asterisk indicates a nonspecific band.

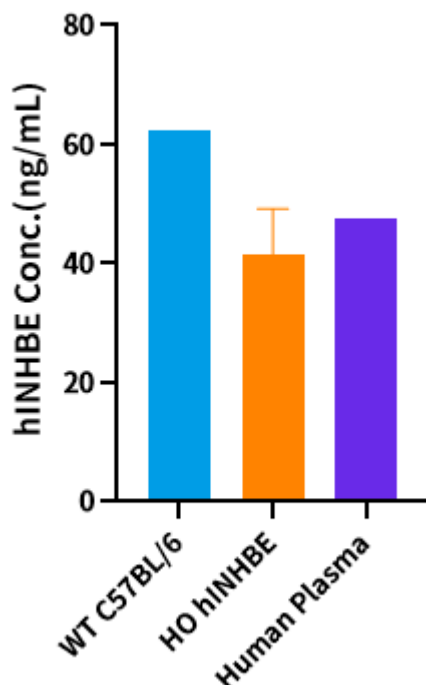


Fig.3 Detection of hINHBE expression in serum by ELISA (n=3).

Note. The human INHBE Elisa kit cross-reacted with mouse INHBE and humanized INHBE.

